



axicon

THE BARCODE EXPERTS

Features

60mm x 45mm
field of view

Three different
operating positions

ISO/IEC compliant
verification

USB powered

Data content checker

Axicon 15200

Linear and 2D barcode verifier

The Axicon 15200 barcode verifier is designed to read both linear and two-dimensional matrix barcodes. Its configuration means it can read small barcodes with an x-dimension down to 0.150mm (6mils).

Its field of view of 60mm x 45mm means that most retail point of sale linear barcodes can be verified as well as those used on small healthcare trade items. All symbols will be verified in accordance with the appropriate ISO/IEC standards.

Data Matrix, GS1 DataMatrix, QR Code, GS1 QR Code, EAN/UPC, Code 128, GS1-128 and Laetus Pharmacode symbols can all be verified if they fit within the field of view. The verifier is designed to be used in three different positions so that even barcodes on awkwardly shaped objects can be easily read. It is powered solely via its USB connection to a PC or laptop, and the software runs on any Microsoft supported version of Windows, from Windows 7 onwards.

The record of each verification includes the image of all the codes in the field of view, as well as the reports for each barcode. These verification files can be consecutively numbered or date and time stamped if required for traceability auditing processes. The verifier may be configured to comply with the FDA regulation 21 CFR Part 11.



About Axicon

Axicon Auto ID is a world leader in barcode verification, having developed and manufactured our own range of verifiers since 1989. Axicon barcode verifiers are used to measure the quality of linear and matrix barcodes, on all levels of product packaging.



Software Specifications

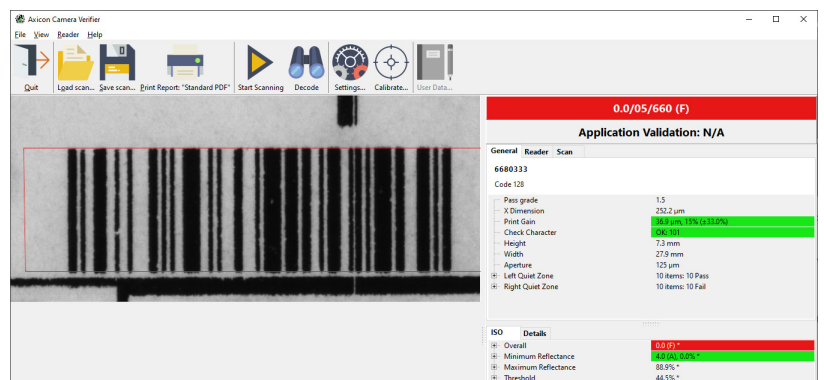
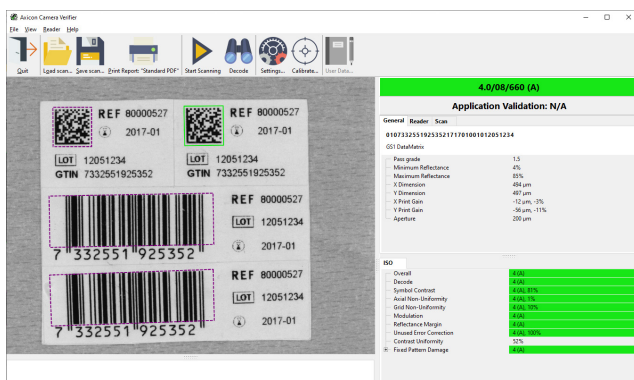
Symbologies verified	EAN-8, EAN-13, UPC-A, UPC-E, ITF-14, GS1-128, GS1 DataMatrix, GS1 QR Code, Data Matrix, GS1 Databar, QR Code, Code 39, Code 93, Code 128, Codabar, ITF, MSI Plessey, Laetus Pharmacode, GS1 Databar Composite Code, PDF417.
Analysis performed on linear symbologies	Full ISO/IEC 15416 parameter analysis, average bar gain, check digit validation, data length, nominal bar width (x-dimension), bar height, symbol structure, quiet zone validation, wide to narrow ratio.
Analysis performed on 2D symbologies	Full ISO/IEC 15415 parameter analysis (parameters vary according to the symbology). Nominal bar width (x-dimension), average module gain.
Data analysis	Data content checker for Application Identifiers with GS1-128, GS1 DataBar, GS1 DataMatrix and GS1 QR Codes.
Logging	Scan saving and loading - stores complete details of scan file data. Allows for remote diagnostics and also for increased traceability. Autosaving of scans for audit trail purposes.
Multi-language	English, French, Spanish, Danish, Dutch, German, Slovenian. Other languages on request

Hardware Specifications

Dimensions	205 x 195 x 141 mm (8" x 7.6" x 5.5") - Maximum image size 60mm x 45mm (2.36" x 1.77")
Weight	1.28 Kg (45 oz)
Construction	Plastic housing, CMOS sensor, LED illumination
Power consumption	Current draw 360mA - supplied from USB host.
Aperture reference numbers	03, 05, 06, 08, 10, 16 and 20. The software automatically identifies the symbology and its nominal bar width (x-dimension) and adjusts the aperture size to comply with the symbology specifications and relevant ISO/IEC standard.
Wavelength of light	660 nm

General Information

Report generation	A report can be produced via the in-built report generator, and saved or printed. The report generator can create reports in .pdf, .html, .txt, .csv or other formats (Append facilities are available for any format which supports this). The report generator is customisable via scripts and templates so reports can be tailored to individual requirements.
System requirements	PC running any currently supported version of Windows - USB 2.0
Environmental	Operating temperature: 10° to 40° C - Storage temperature: -20° to 70° C Relative humidity: 25% to 80% @ 40° C non-condensing
Regulatory approvals	CE certified, RoHS compliant. Meets ISO/IEC 15415, ISO/IEC15416, ISO/IEC 15426-1 and ISO/IEC 15426-2 standards. Has all the features necessary to meet the requirements of 21 CFR part 11.
Warranty	Two years parts and labour - return to bench.



All trademarks are acknowledged as belonging to their respective companies. As Axicon continually improves its products, the specifications and features explained in this document are subject to change without notice.

