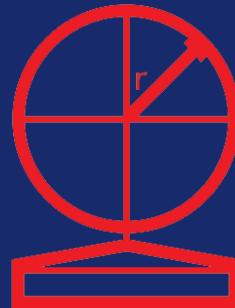
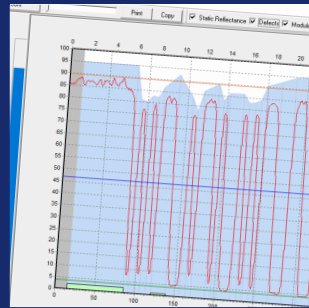




Summary	
EAN-13	
012345678900	
Grade (Pass=1.5)	Average 3.6/06/660
Average Bar Gain (tolerance)	7% (±30)
Magnification	0.013" (10)
Check Character	OK (0)
Structure	1.1
Left Margin	1.1
Right Margin	1.1
Aperture	
Date & Time	29/08/2019 15:51:47
Reader Info	\$5093 (v0301) Resolution=75



Decodation Scan	
539477297209128	
all Grade	OVERALL B (3.3)
Reflectance	FMMin A (4.0)
Contrast	FMMax
Modulation	Threshold
Defects	Reflectance Margin
Decodability	Symbol Contrast B (3.3)
Decode	Edge Contrast A (4.0)
	Modulation A (4.0)
	Defects A (4.0)
	Decodability A (4.0)



6500 series linear barcode verifier

axicon

THE BARCODE EXPERTS

Features

Verification for point of sale and outer case barcodes

ISO/IEC (ANSI) compliant verification

GS1 specifications

USB powered

Lightweight and portable

Two year warranty

Results are immediately displayed on screen, and reports can be printed or e-mailed for remote diagnosis. Reports may be saved automatically to support ISO 9001 quality control procedures. Simple user-friendly calibration, and configuration of how results are displayed. This verifier is perfect for product manufacturers, label printers, printers and packagers, and pre-press studios. It is widely used by major retailers worldwide.



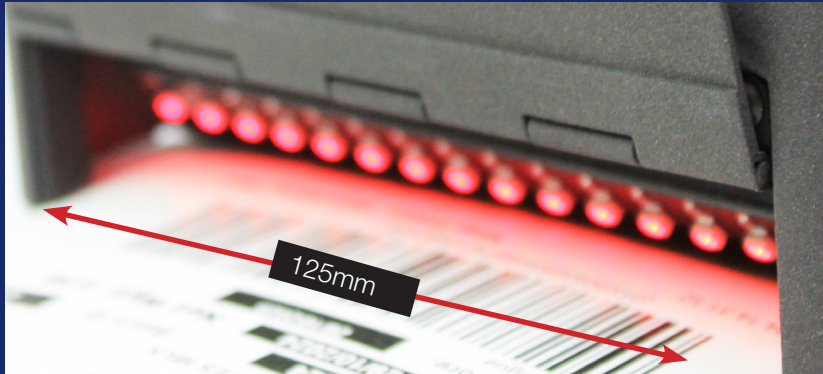
Approved



Axicon 6515

Mid range barcode verifier

The Axicon 6515 barcode verifier has been designed to read linear barcodes with a width of up to 125mm (4.9") including quiet zones. This means only one verifier is needed to check all your GS1 barcodes – EAN/UPC, ITF-14 and GS1-128 – if the outer case and logistics label barcodes are not at their maximum size.



Axicon 6525-S

High speed mid range barcode verifier

The 'S' range of Axicon verifiers has a continuous scan feature, which means that obtaining at least ten different readings throughout the height of the barcode (as required by ISO/IEC) is much faster. Simply place the verifier slightly above or below the barcode, press the trigger and slide the verifier over the code – in less than a second you can have results of up to 100 scans of the code at different points in the bar height.



Symbologies verified



Plus: Codabar, ITF, MSI Plessey and more...

Aperture reference

The software automatically identifies the symbology and its bar width (x-dimension) and adjusts the aperture size to comply with the symbology specifications and relevant ISO/IEC standard.

Free licence software

The verifier will analyse according to ISO/IEC 15416.

In addition the software can also check applications, such as:

GS1 General Specifications

Data content checking

Job Reference

ISBN barcodes

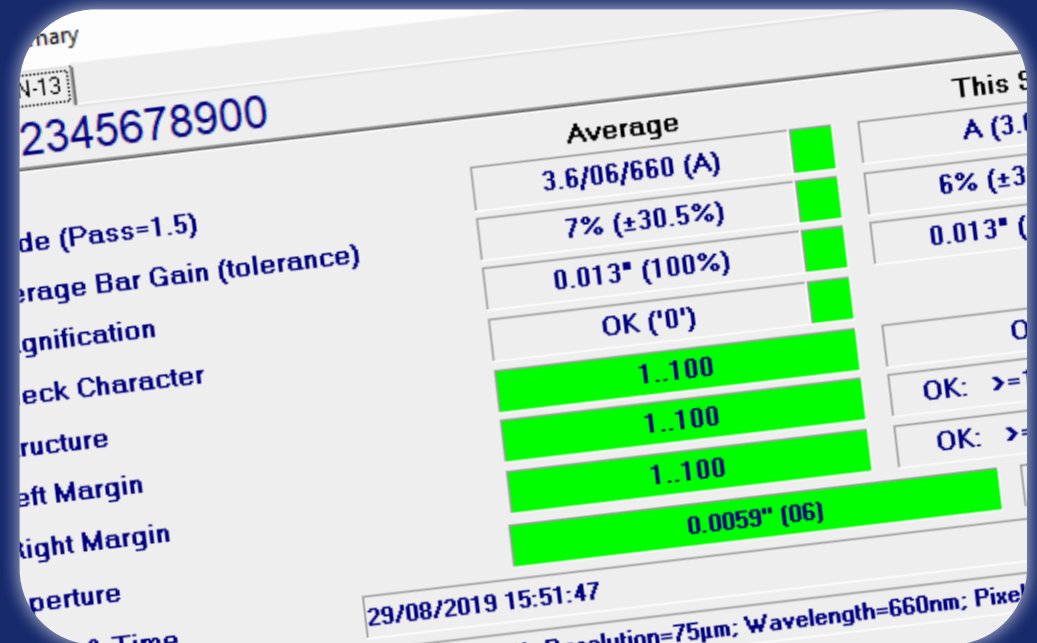
Product Lookup

Coupon codes

HIBC

Instore

And more....

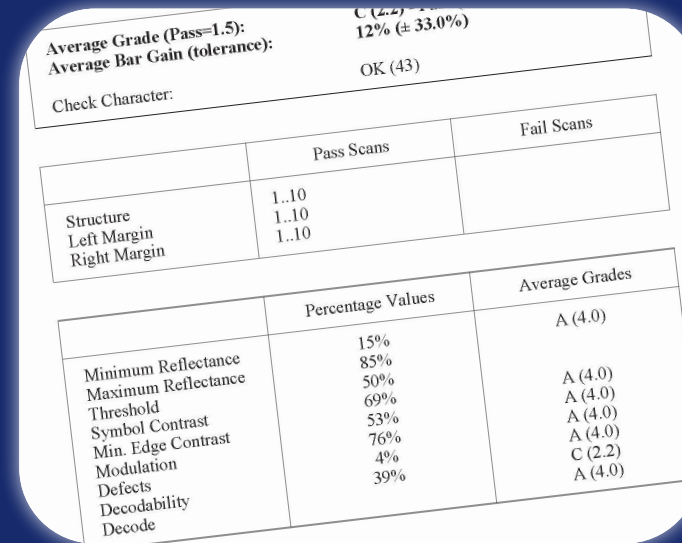


Reporting / Saving

Verification reports can be saved in various formats including:

PDF
HTML
CSV
TXT

Reports will include all ISO verification parameter grades in ISO/ANSI format.



Average Grade (Pass=1.5):		C (2.2) = 1.5
Average Bar Gain (tolerance):		12% (± 33.0%)
Check Character:		OK (43)
	Pass Scans	Fail Scans
Structure	1..10	
Left Margin	1..10	
Right Margin	1..10	
	Percentage Values	Average Grades
Minimum Reflectance	15%	A (4.0)
Maximum Reflectance	85%	A (4.0)
Threshold	50%	A (4.0)
Symbol Contrast	69%	A (4.0)
Min. Edge Contrast	53%	A (4.0)
Modulation	76%	C (2.2)
Defects	4%	A (4.0)
Decodability	39%	A (4.0)
Decode		

21 CFR part 11



Auto saving of reports and user permission controls features enable 21 CFR part 11 compliance.

IQ / OQ / PQ



Installation, operational and performance qualification available. Comprises documentation, results forms and performance test cards.



Software languages available

English

French (Français)

Spanish (Español)

Dutch (Nederlands)

Chinese (中文)
Simplified | Traditional

German (Deutsch)

Czech (Čeština)

Japanese (日本人)

Polish (Polski)

Italian (Italiano)

Korean (한국어)

Danish (Dansk)

Thailand (ไทย)

Hardware specifications

Dimensions	145 x 113 x 128mm (5.7"x 4.4" x 5.0")
Weight	675g (23.8 oz)
Construction	ABS plastic, CCD sensor, LED illumination
IP Options	Available with IP50 (60529) rated protection.
Power consumption	Current draw 150mA at 5v – supplied from USB-2 host
Wavelength of light	660 nm (red)
Calibration	N.I.S.T. traceable calibration card with certificate included
Carry case	Supplied for transport and storage
Environmental	Operating temperature: 10° to 40°C - Storage temperature: -20° to 70°C Relative humidity: 25% to 80% @ 40°C non-condensing
Regulatory approvals	CE certified, RoHS compliant

Contact

Axicon Auto ID Limited

Village Farm

Church Road

Weston on the Green

Oxfordshire

OX25 3QP

UK



Tel: +44 (0)1869 351155

Email: info@axicon.com

Web: www.axicon.com

Global office locations available on our website

